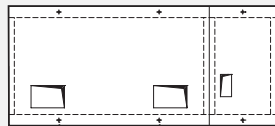
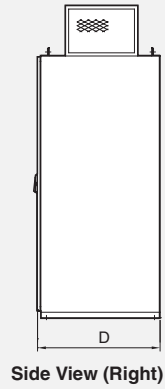
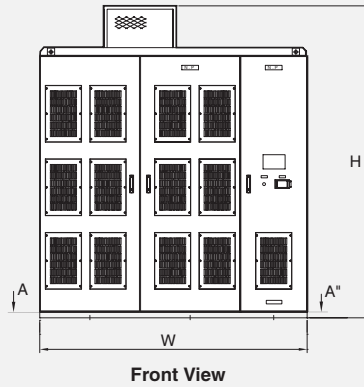
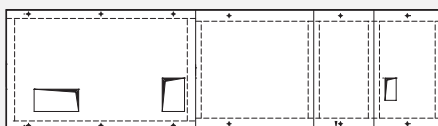
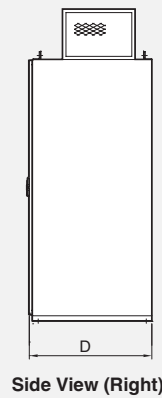
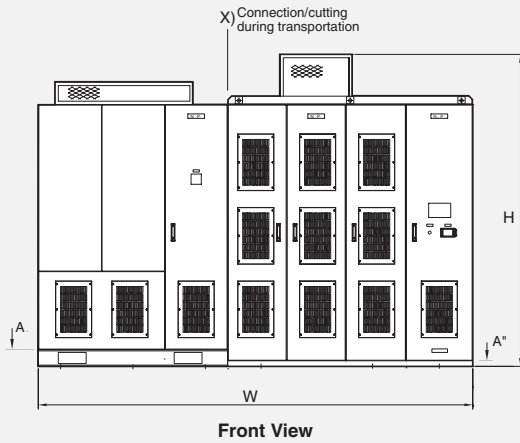


Outline and Dimensions

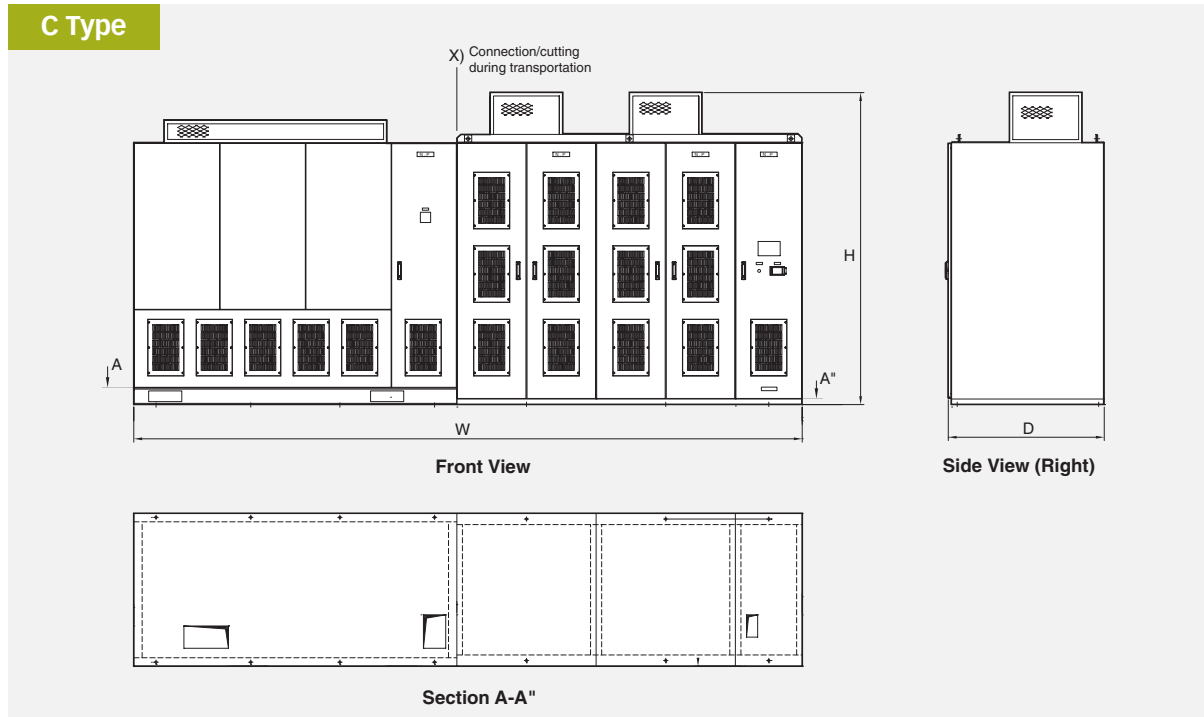
A Type



B Type



C Type



Voltage (V)	Capacity (kVA)	Type	W (mm)	D (mm)	H (mm)	Weight (Approx) (kg)
3300	200	A	2000	2800	1100	2,700
	300	A	2000	2800	1100	3,000
	400	A	2400	2800	1100	3,400
	500	A	2400	2800	1100	3,600
	600	B	3300	2800	1100	4,300
	750	B	3300	2800	1100	4,600
	1000	B	3600	2800	1200	5,200
	1250	B	3600	2800	1200	5,600
	1500	B	3800	2800	1400	6,300
	1750	B	3800	2800	1400	6,800
	2000	B	3900	2800	1400	7,500
6600	2250	B	3900	2800	1400	8,000
	400	B	3200	2800	1100	4,400
	600	B	3200	2800	1100	5,000
	800	B	3900	2800	1100	5,700
	1000	B	3900	2800	1100	6,000
	1200	C	4900	2800	1100	6,800
	1500	C	4900	2800	1100	7,300
	2000	C	5100	2800	1200	8,500
	2500	C	5100	2800	1200	9,000
	3000	C	5200	2800	1400	10,000
	3500	C	5700	2800	1400	11,000
4000	C	5900	2800	1400	13,000	
4500	C	6000	2800	1400	13,500	